

**Serie | 6, Built-in oven, 60 x 60 cm,  
Stainless steel  
HBT578FS1A**



**Included accessories**

1 x enamel baking tray  
2 x combination grid  
1 x universal pan  
2 x Universal pan  
slim size

**Optional accessories**

HEZ317000 : Pizza pan, grey enamelled  
HEZ327000 : Pizza stone  
HEZ333001 : Lid for professional pan

**The built-in oven with meatprobe and  
AutoPilot: automatically prepares your  
dishes to the point of doneness you like.**

- **Pop-out controls:** for an easy to clean front.
- **2 universal pans, slim size:** optimized for smaller amounts of different dishes.
- **Pyrolytic self-cleaning:** no cleaning effort thanks to automatic self-cleaning.
- **3D Hotair:** perfect results thanks to optimal distribution of heat on up to 3 levels simultaneously.

**Technical Data**

Color / Material Front :	Stainless steel
Built-in / Free-standing :	Built-in
Integrated Cleaning system :	Pyrolytic+Hydrolytic
Required niche size for installation (HxWxD) :	585-595 x 560-568 x 550
Dimensions :	595 x 594 x 548
Dimensions of the packed product (HxWxD) (mm) :	675 x 690 x 660
Control Panel Material :	Stainless steel
Door Material :	Glass
Net weight (kg) :	40.495
Usable volume of cavity (l) :	71
Cooking method :	Bottom heat, Conventional heat, Defrost, Full width grill, Hot Air, Hotair gentle, Hot air grilling, low temperature cooking, Pizza setting, warming
First cavity material :	Other
Oven control :	electronic
Number of interior lights :	1
Approval certificates :	CE, VDE
Length electrical supply cord (cm) :	120
EAN code :	4242005057467
Number of cavities (2010/30/EC) :	1
Energy efficiency rating :	A
Energy consumption per cycle conventional (2010/30/EC) :	0.99
Energy consumption per cycle forced air convection (2010/30/EC) :	0.81
Energy efficiency index (2010/30/EC) :	95.3
Connection Rating (W) :	3600
Current (A) :	16
Voltage (V) :	220-240
Frequency (Hz) :	60; 50
Plug type :	no plug



## Serie | 6, Built-in oven, 60 x 60 cm, Stainless steel HBT578FS1A

**The built-in oven with meatprobe and AutoPilot: automatically prepares your dishes to the point of doneness you like.**

---

### Heating Modes

- Oven with 10 heating methods:
  - 3D Hotair
  - Top/Bottom heating
  - Hot-air grilling
  - Grill large area
  - Pizza setting
  - Bottom heating
  - Slow cooking
  - Defrost
  - Keep warm
  - Hotair gentle

### Design

- Rotary Control Knobs, round, Retractable rotary control knobs
- Stainless steel straight bar handle
- Cavity volume: 71 l
- Enamelled cavity (grey) with 5 shelf positions

### Convenience

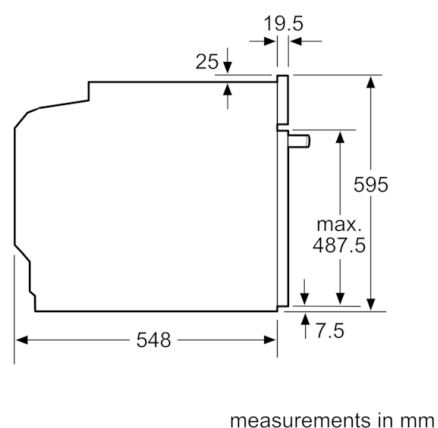
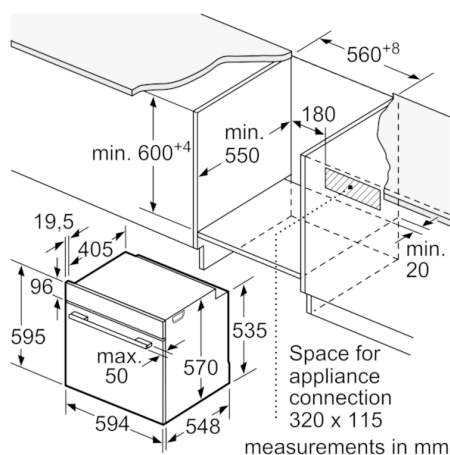
- single point meat probe
- Halogen lighting
- Maximum window temperature 30 °C
- Temperature range 30 °C - 275 °C
- Quadruple glass door panel
- Pyrolytic cleaning function
- Child lock
  - Residual heat indicator
  - Automatic switch off
- 30 PC
- Cooling fan
- Pull-out system: 1-level
- Electronic functions: Temperature proposal, Temperature indicator line, automatic start, AutoPilot, Sabbath setting, Meat probe

### Technical Information

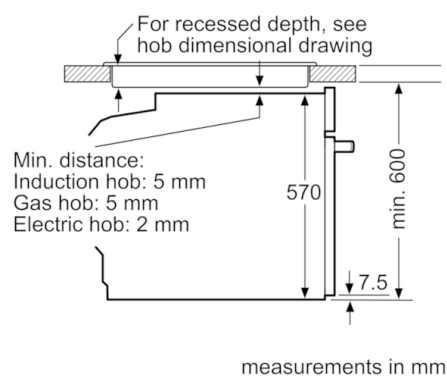
- Appliance dimension (HxWxD): 595 mm x 594 mm x 548 mm
- Installation dimensions (HxWxD): 585 mm - 595 mm x 560 mm - 568 mm x 550 mm
- Total connected load electric: 3.6 KW
- 1 set of level independent telescopic rails (Clip-on rail)
- Length of mains cable: 120 cm

## Serie | 6, Built-in oven, 60 x 60 cm, Stainless steel

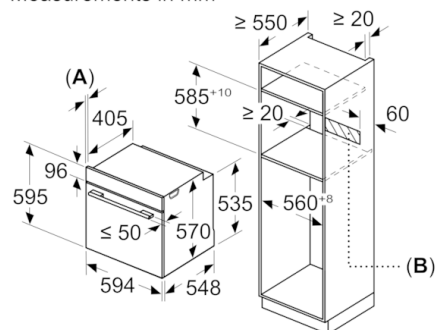
### HB T578FS1A



Installation with a hob.



Measurements in mm



A: 19.5 mm

B: Space for appliance connection 320 x 115 mm