

**Serie | 6, integrated rangehood, 70 cm, Stainless steel
DHL785BAU**



The canopy cooker hood: offers you flexibility in your kitchen planning - mount it either on the wall or above a kitchen island.

- With exhaust, the air is cleaned by a grease filter and then ducted to the outside which ensures optimal kitchen air quality
- **Intensive speed setting with reset:** automatically resets the hood to normal speed setting after 6 min..
- **LED lighting:** for perfect, energy-efficient illumination of the cooktop.
- Dishwasher safe aluminum mesh filters
- **Intensive speed setting:** removes strong kitchen odours especially quickly and effectively.

Technical Data

Typology :	Traditional
Approval certificates :	Australia Standards, CE, VDE
Length electrical supply cord (cm) :	150
Required niche size for installation (HxWxD) :	418mm x 676.0mm x 264mm
Minimum distance above an electric hob :	500
Minimum distance above a gas hob :	650
Net weight (kg) :	9.066
Type of control :	Electronic
Maximum output air extraction (m ³ /h) :	630
Boost position output recirculating (m ³ /h) :	664
Maximum output recirculating air (m ³ /h) :	571
Boost position air extraction (m ³ /h) :	730
Number of lights :	2
Noise level (dB) :	66
Diameter of air outlet (mm) :	150 / 120
Grease filter material :	Washable aluminium
EAN code :	4242002831183
Connection Rating (W) :	277
Current (A) :	3
Voltage (V) :	220-240
Frequency (Hz) :	50
Plug type :	AU plug
Installation typology :	Built-in



4 242002 831183

**Serie | 6, integrated rangehood, 70 cm,
Stainless steel
DHL785BAU**

**The canopy cooker hood: offers you
flexibility in your kitchen planning - mount it
either on the wall or above a kitchen island.**

Design

- Appliance colour: Stainless steel
- 70 cm, Integrated Rangehood
- Suitable for ducted or recirculating operation

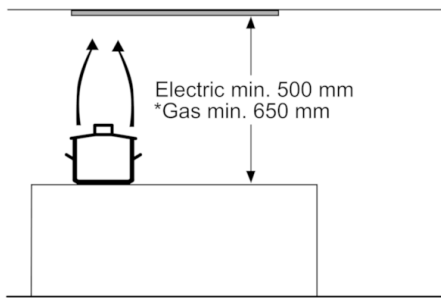
Convenience

- 3 power settings plus intensive setting
- 6 min.
- Push button controls with Electronic display
- For recirculated extraction optional Recirc. kit or clean air kit (accessory) needed
- Dishwasher safe metal grease filters
- Metal grease filters with stainless steel cover
- Saturation indicator for metal & carbon filters

Technical Information

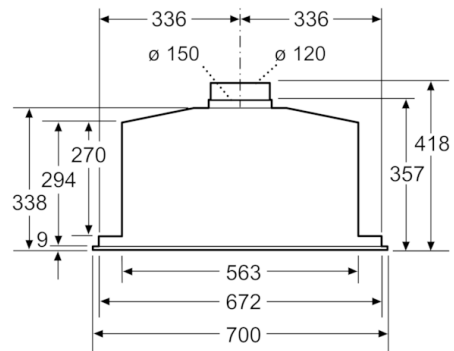
- 2 x LED lighting
- Light Intensity: 244 lux
- 277 W total connected load
- Extraction rate according to EN 61591:
Min: 340 m³/h
Intensive: 730 m³/h
- Extraction rate exhaust air according to EN 61591:
max. normal use 630 m³/h, intensive 730 m³/h
- Noise level according to EN 60704-3 und EN 60704-2-13
exhaust air:
Max. normal use: 66 dB(A) re 1 pW sound pressure: 52 dB(A)
Intensive: 69 dB(A) re 1 pW (55 dB(A) re 20 µPa sound
pressure)
- 120 or 150mm tube connected diameter
- Noise min./max. Normal Level: 53/66 dB*
- Rim ventilation

**Serie | 6, integrated rangehood, 70 cm,
Stainless steel
DHL785BAU**

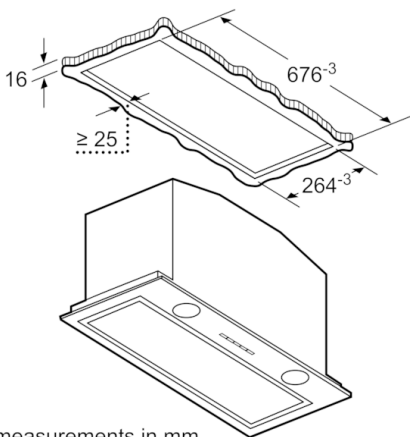


* from upper edge of pan support

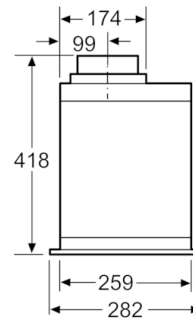
measurements in mm



measurements in mm



measurements in mm



measurements in mm