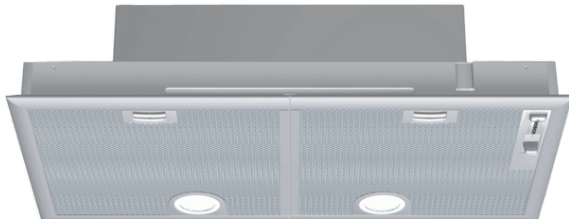


**Serie | 4, integrated rangehood, 75 cm, Silver metallic
DHL755BAU**



The canopy cooker hood: offers you flexibility in your kitchen planning - mount it either on the wall or above a kitchen island.

- **especially silent:** maximal extractor performance with minimal noise
- **Grease filtration level:** filters out over 85% of the grease from kitchen air
- With exhaust, the air is cleaned by a grease filter and then ducted to the outside which ensures optimal kitchen air quality
- **LED lighting:** for perfect, energy-efficient illumination of the cooktop.
- **Intensive speed setting:** removes strong kitchen odours especially quickly and effectively.

Technical Data

| | |
|---|--------------------------|
| Typology : | Traditional |
| Approval certificates : | Australia Standards, VDE |
| Length electrical supply cord (cm) : | 130 |
| Required niche size for installation (HxWxD) : | 255mm x 700.0mm x 350mm |
| Minimum distance above an electric hob : | 650 |
| Minimum distance above a gas hob : | 650 |
| Net weight (kg) : | 9.082 |
| Type of control : | mechanical |
| Maximum output air extraction (m ³ /h) : | 379 |
| Boost position output recirculating (m ³ /h) : | 408.0 |
| Maximum output recirculating air (m ³ /h) : | 278 |
| Boost position air extraction (m ³ /h) : | 638 |
| Number of lights : | 2 |
| Noise level (dB) : | 56 |
| Diameter of air outlet (mm) : | 150 / 120 |
| Grease filter material : | Washable aluminium |
| EAN code : | 4242002721651 |
| Connection Rating (W) : | 206 |
| Current (A) : | 10 |
| Voltage (V) : | 220-240 |
| Frequency (Hz) : | 50 |
| Plug type : | AU plug |
| Installation typology : | Built-in |



4 242002 721651

**Serie | 4, integrated rangehood, 75 cm, Silver metallic
DHL755BAU**

The canopy cooker hood: offers you flexibility in your kitchen planning - mount it either on the wall or above a kitchen island.

Design

- Appliance colour: Stainless steel
- 73 cm, Integrated Rangehood
- Suitable for ducted or recirculating operation

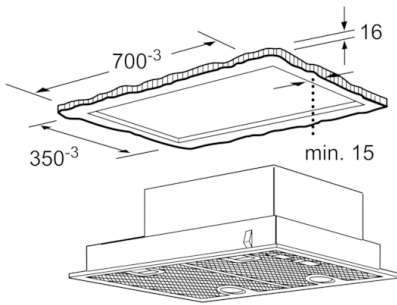
Convenience

- 3 power settings plus intensive setting
- Push Button controls for power and light
- 2 dishwasher-safe metal grease filters
- Perforated stainless steel filter covers
- Powerful twin motor

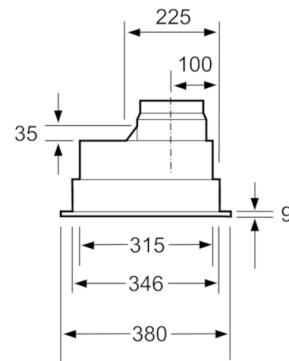
Technical Information

- 2 x LED lighting
- 206 W total connected load
- Extraction rate according to EN 61591:
Min: 198.9 m³/h
Intensive: 638 m³/h
- Extraction rate exhaust air according to EN 61591:
max. normal use 379 m³/h, intensive 638 m³/h
- 120 or 150mm tube connected diameter

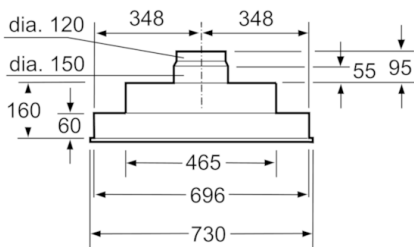
**Serie | 4, integrated rangehood, 75 cm, Silver metallic
DHL755BAU**



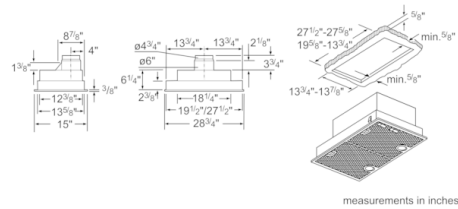
measurements in mm



measurements in mm



measurements in mm



measurements in inches